

# CAPITAL



## M/V AGAMEMNON    M/V ARCHIMIDIS

**BUILT:** 2006-2007

**CLASS:** BV

**FLAG:** LIBERIA



**BUILDER:** Daewoo Shipbuilding & Marine Engineering Co., Ltd., S.Korea

### VESSEL PARTICULARS

Type of vessel:	Gearless Cellular Container Vessel AUT-UMS, SYS-NEQ, CLEANSHIP, BWE, INWATERSURVEY, ICE, SDS
Length, overall:	317.80 m
Length, between pp:	303.00 m
Breadth, moulded:	43.20 m
Depth, to main deck:	24.50 m
Draught, design (Td):	13.00 m
Draught, scantling (Ts):	14.96 m
Air Draft:	59.00 m, distance from keel to highest mast (tilted)
Deadweight, design (Td):	86,449 MT
Deadweight, scantling (Ts):	108,892 MT
International NT	53,921
International GT	89,776



### CONTAINER CAPACITY

Nominal capacity	
On Deck:	4,543 TEU (max 9 tiers)
In Holds:	3,723 TEU (9 tiers)
Total	<u>8,266 TEU</u>
Homog. intake @ 14 mt	abt. <b>6,680 TEU</b>
Reefer Plugs on Deck	500
Reefer Plugs in Holds	200
Reefer Plugs Total	<u>700</u>

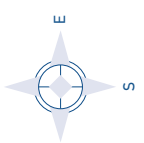
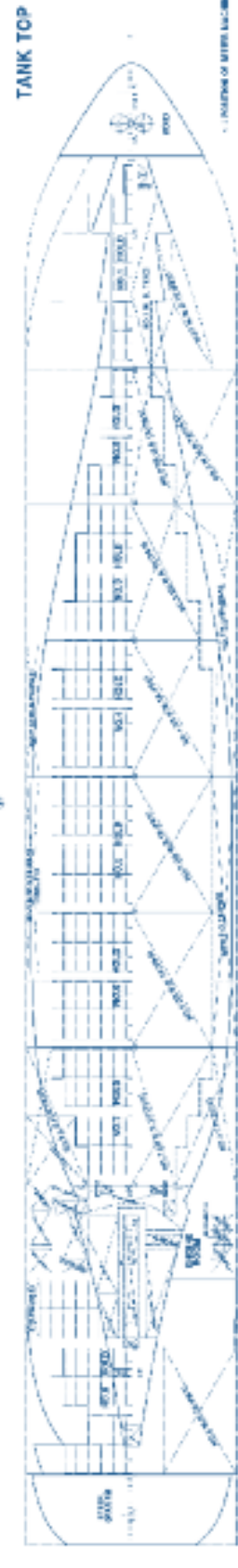
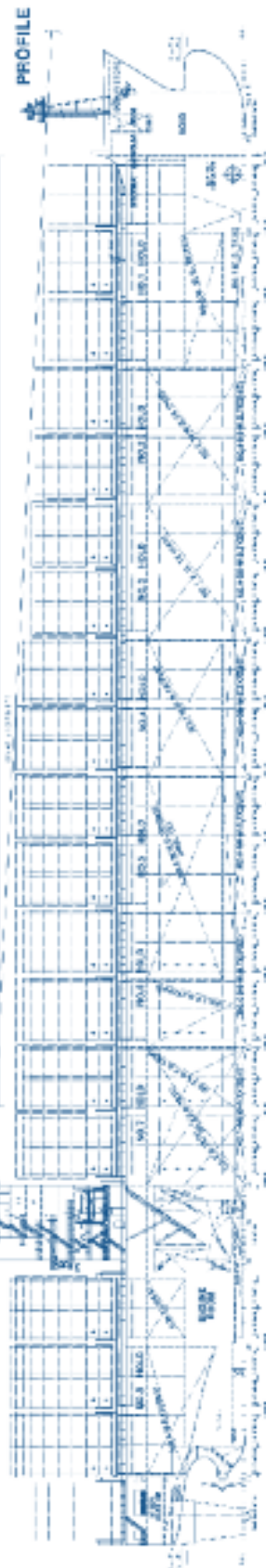
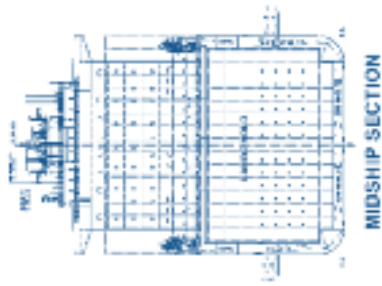
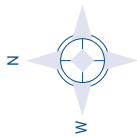


### PROPULSION

Main engine:	Wartsila Sulzer 12RT-flex96C (Full Wartsila Slow Steaming Upgrading Kit installed)
MCR	93,360 bhp @ 102.0 rpm
NCR	84,020 bhp @ 98.5 rpm
	ALL DETAILS ABOUT



SHIP MANAGEMENT CORP



### M/V AGAMEMNON M/V ARCHIMIDIS

3, Iassonos St., Piraeus 185 37, GREECE  
Tel: +30 210 4584900, Fax: +30 210 4285679  
e-mail: info@capitalship.gr - www.capitalship.gr