

CAPITAL



M/V CAPE AGAMEMNON

BUILT: 2010

CLASS: ABS

FLAG: LIBERIA



BUILDER: Sungdong Shipbuilding & Marine Engineering Co. Ltd., Republic of Korea

VESSEL MAIN PARTICULARS

Type of vessel:	Bulk Carrier, +A1 BC-A (Hold 2,4, 6 & 8 may be empty), (E), +AMS, +ACCU, TCM, ESP, CSR, Safeship-CM, GRAB(20), RW, UWILD
Summer deadweight:	179,221 MT
Summer draft:	18.322 m
LOA:	292 m
Beam:	45 m
GT / NT:	92,744 / 58,728
Grain capacity:	H1:683,833.46, H2:788,248.38, H3:791,221.87, H4:791,221.87, H5: 819,424.18, H6: 819,925.65, H7:791,292.5, H8:778,349.67, H9:714,610.21 cft
Bale capacity:	H1:649,641.79, H2:748,833.66, H3:751,662.37, H4:751,658.84, H5:778,452.09, H6:778,928.83, H7:751, 729.47, H8:739,432.9, H9: 678,882.35 cft
TPC at summer draft:	122.4

CARGO ARRANGEMENT

Cargo holds / hatches:	9 holds / 9 hatches strengthened for heavy cargoes
Australian hold ladder:	Fitted in all tanks
CO2:	Not Fitted
El. Ventilation:	Natural Ventilation
Logs Fitted:	No
Cranes / SWL:	None
Grabs / capacity:	None
Tank top strength:	No.1: 29.0 MT / m ² / No. 2,4,6,8: 23.0 MT / m ² / No. 3,5,7,9: 29.7 MT / m ²
Deck strength:	3.0 MT/ m ²
Hatch covers strength:	1.75 MT/ m ²
Hatch covers type:	MAC GREGOR side rolling type
Hatch dimensions:	No 1, 9: 15.64 x 17.2 m / No. 2,8: 15.64 x 20.6 m
Hold dimensions:	L X W on tanktop x Hmax height No.1,4: 25.74 x 24.10 m / No. 7,9: 25.74 x 24.10 m No. 5,6: 26.68 x 24.10 m
A60 Bulkhead:	Yes



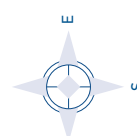
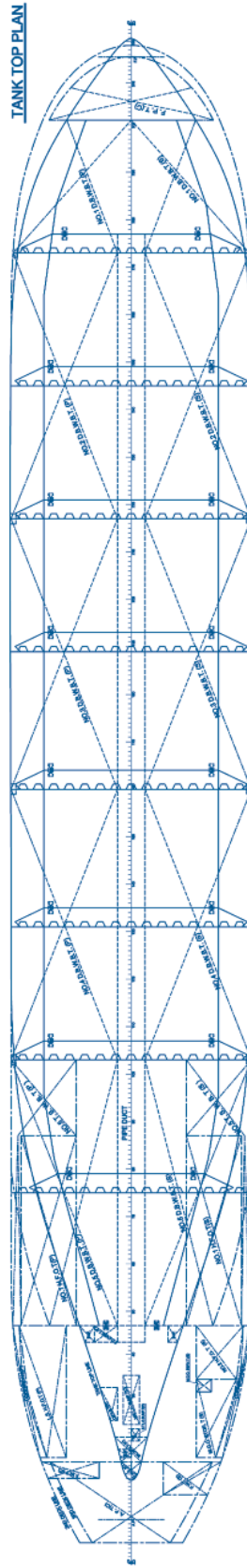
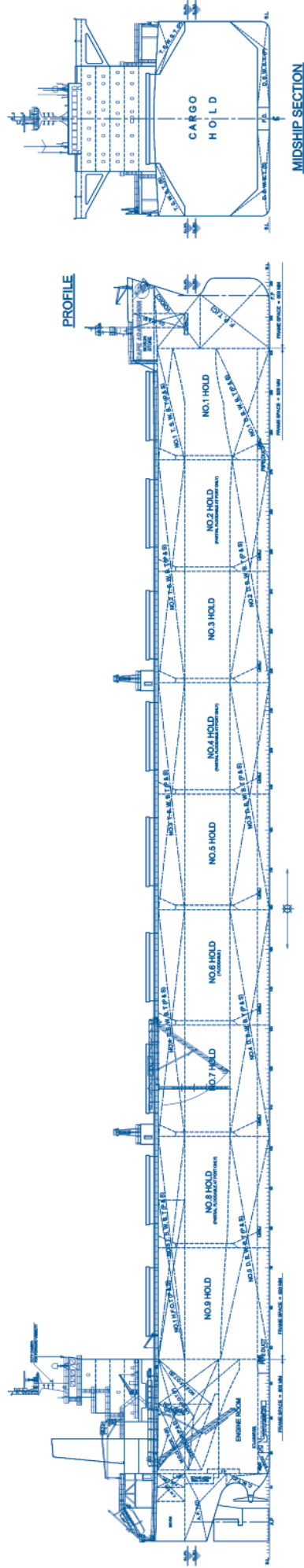
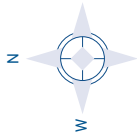
PROPULSION

Main engine:	MAN B & W 6S70MC-C MK VII
Propeller type:	4 bladed solid fixed prope
Generators:	3 HYUNDAI - HIMSEN 7H17/28 x 690 Kwe

ALL DETAILS ABOUT

CAPITAL

SHIP MANAGEMENT CORP



M/V CAPE AGAMEMNON

3, Iassonos St., Piraeus 185 37, GREECE
Tel: +30 210 4584900, Fax: +30 210 4285679
e-mail: info@capitalship.gr - www.capitalship.gr