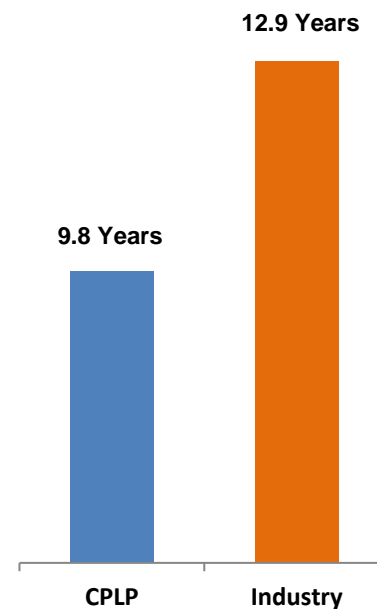


Modern High-Specification Fleet

Fleet Profile

Vessel Name	Type	TEU / DWT	Built	Yard
Aristomenis	Container Carrier	10,000	2011	SHI
Athos	Container Carrier	10,000	2011	SHI
Athenian	Container Carrier	10,000	2011	SHI
Akadimos	Eco-Flex, Wide Beam Container Carrier	9,288	2016	Daewoo
CMA CGM Uruguay	Eco-Flex, Wide Beam Container Carrier	9,288	2015	Daewoo
CMA CGM Magdalena	Eco-Flex, Wide Beam Container Carrier	9,288	2016	Daewoo
Agamemnon	Container Carrier	8,266	2007	Daewoo
Archimidis	Container Carrier	8,266	2006	Daewoo
Long Beach Express	Container Carrier	5,100	2008	HHI
Seattle Express	Container Carrier	5,100	2008	HHI
Fos Express	Container Carrier	5,100	2008	HHI
Hyundai Prestige	Eco Wide Beam Container Carrier	5,023	2013	HHI
Hyundai Premium	Eco Wide Beam Container Carrier	5,023	2013	HHI
Hyundai Paramaount	Eco Wide Beam Container Carrier	5,023	2013	HHI
Hyundai Privilege	Eco Wide Beam Container Carrier	5,023	2013	HHI
Hyundai Platinum	Eco Wide Beam Container Carrier	5,023	2013	HHI
Cape Agamemnon	Capesize Dry Cargo	179,221	2010	Sungdong

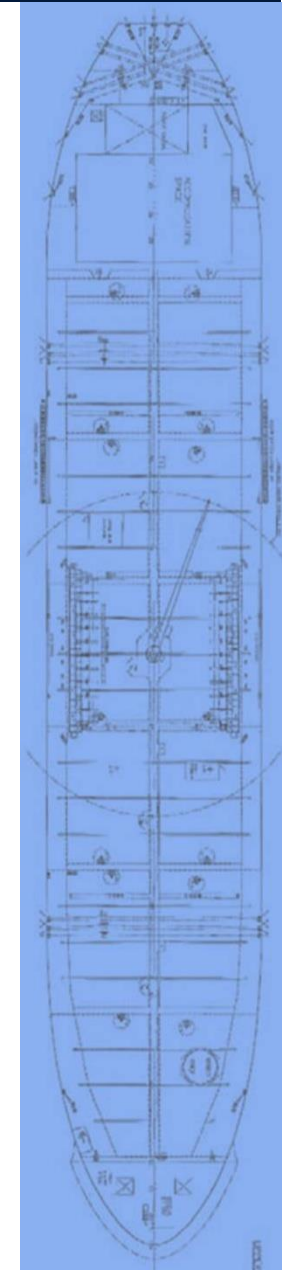
Fleet Age



17 Vessels - 1.6mm DWT (~115k TEUs)

9.8 Years Average Fleet Age

¹ Industry average age data from Clarksons as of April 2021 weighted by dwt for the composition of the CPLP fleet.



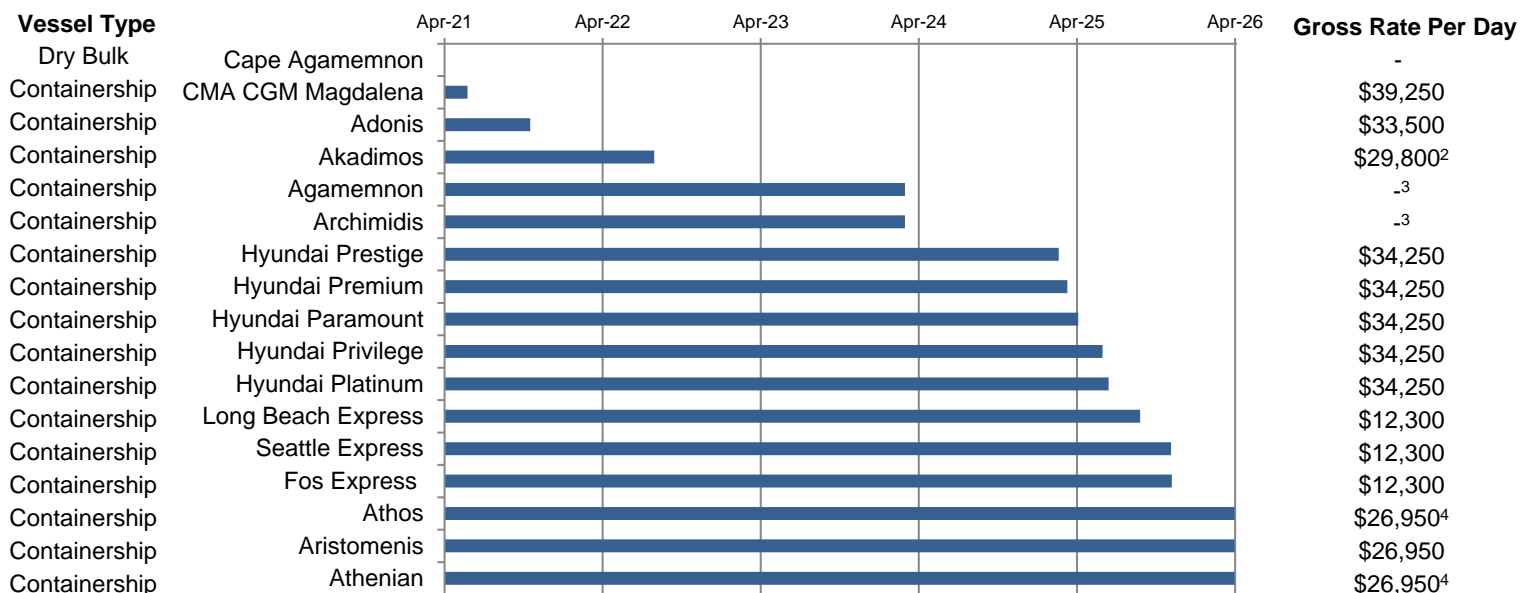
Strong Charter Coverage

- **Strong charter coverage on CPLP assets.**
 - ▶ 16 containerships and 1 drybulk vessel with 4.1 years remaining on charter on average.
- **88% and 80% charter coverage¹ for 2021 and 2022, respectively.**

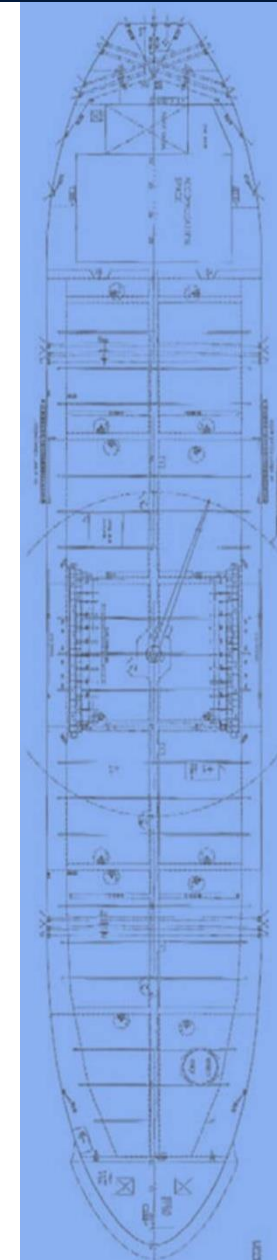
Charter Profile

Expiry of Current Charters

Rates



High Quality Customer Base



¹ 94% and 91% for 2021 and 2022, respectively, pro forma for the sale of the M/V 'Adonis' and M/V 'CMA CGM Magdalena'. ² Blended average of escalating rate basis minimum charter period. ³ Expected to generate collectively an EBITDA of approximately \$44.5 million. ⁴ \$25,950pd until Jul/2021.