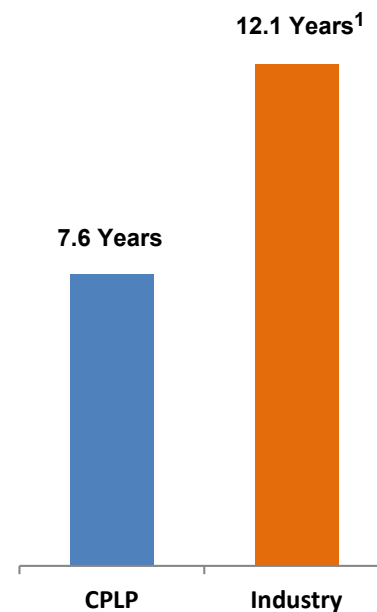


# Modern High-Specification Fleet

## Fleet Profile

Vessel Name	Type	TEU / DWT	Built	Yard
CMA CGM Amazon	Eco-Flex, Wide Beam Container	9,288	2015	Daewoo
CMA CGM Uruguay	Eco-Flex, Wide Beam Container	9,288	2015	Daewoo
CMA CGM Magdalena	Eco-Flex, Wide Beam Container	9,288	2016	Daewoo
Agamemnon	Container Carrier	8,266	2007	Daewoo
Archimidis	Container Carrier	8,266	2006	Daewoo
Hyundai Prestige	Eco Wide Beam Container Carrier	5,023	2013	HHI
Hyundai Premium	Eco Wide Beam Container Carrier	5,023	2013	HHI
Hyundai Paramount	Eco Wide Beam Container Carrier	5,023	2013	HHI
Hyundai Privilege	Eco Wide Beam Container Carrier	5,023	2013	HHI
Hyundai Platinum	Eco Wide Beam Container Carrier	5,023	2013	HHI
Cape Agamemnon	Capesize Dry Cargo	179,221	2010	Sungdong

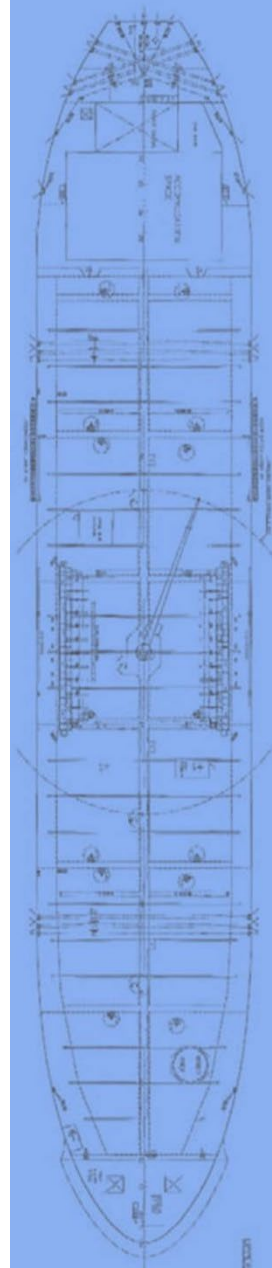
## Fleet Age



11 Vessels - 1.1mm DWT (~70k TEUs)

7.6 Years Weighted Average Fleet Age

<sup>1</sup> Industry average age data from Clarksons as of October 2019 weighted by dwt for the composition of the CPLP fleet.



# Strong Charter Coverage

- **Strong charter coverage on CPLP assets.**
  - ▶ 10 containerships and 1 drybulk vessel with 4.8 years remaining on charter on average.
- **90% and 67% charter coverage for 2020 and 2021, respectively.**

## Charter Profile

### Expiry of Current Charters

### Rates

Vessel Type		Oct-19	Oct-20	Oct-21	Oct-22	Oct-23	Oct-24	Oct-25	Gross Rate Per Day
Eco Containership	CMA CGM Amazon								\$39,250
Drybulk	Cape Agamemnon								\$42,200
Eco Containership	CMA CGM Uruguay								\$39,250
Eco Containership	CMA CGM Magdalena								\$39,250
Containership	Agamemnon								— <sup>2</sup>
Containership	Archimidis								— <sup>2</sup>
Containership	Hyundai Prestige								\$29,350 / \$34,250 <sup>1</sup>
Containership	Hyundai Premium								\$29,350 / \$34,250 <sup>1</sup>
Containership	Hyundai Paramount								\$29,350 / \$34,250 <sup>1</sup>
Containership	Hyundai Privilege								\$29,350 / \$34,250 <sup>1</sup>
Containership	Hyundai Platinum								\$29,350 / \$34,250 <sup>1</sup>

## High Quality Customer Base



<sup>1</sup> \$23,480pd between July 18, 2016 to December 31, 2019. Further upward adjustment by \$4,900pd from January 2020 or fitting of scrubber, whichever is later, until charter expiry. <sup>2</sup> Expected to generate collectively an EBITDA of approximately \$44.5 million.

