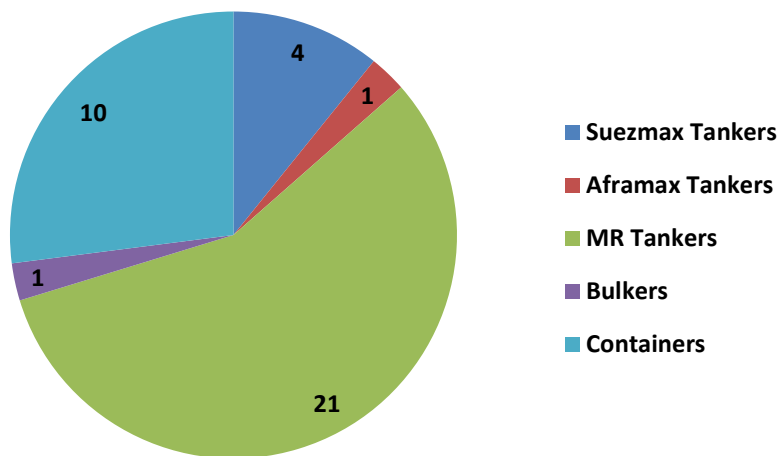
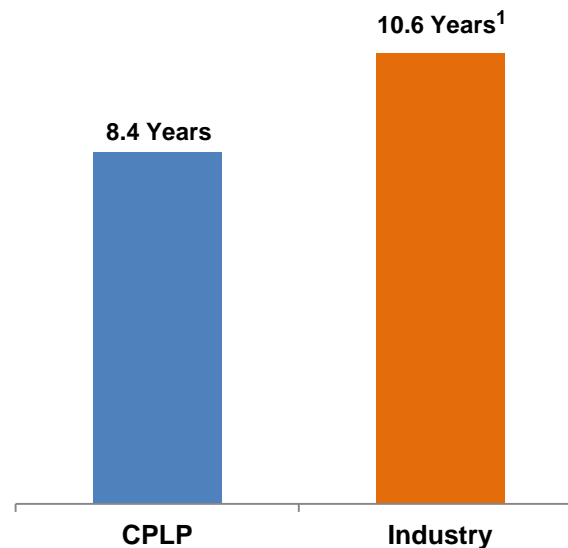


Modern High-Specification Fleet

Fleet Profile



Fleet Age



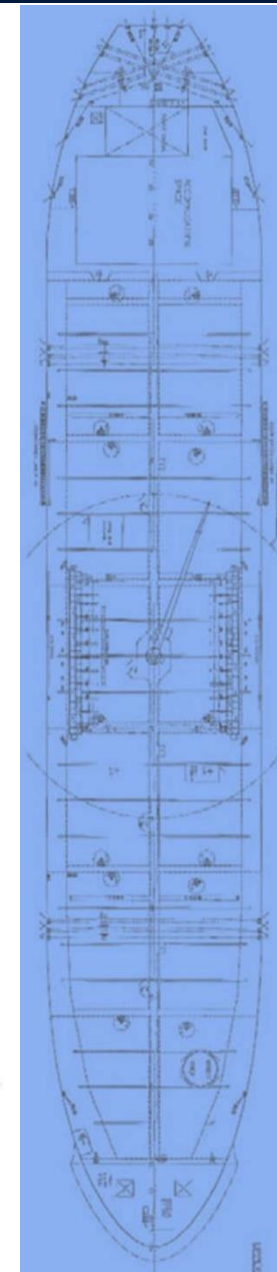
Diversified Customer Base



37 Vessels - 2.8mm DWT (~70k TEUs)

8.4 Years Weighted Average Fleet Age

¹ Industry average age data from Clarksons as of May 2018 weighted by dwt for the composition of the CPLP fleet.



Strong Charter Coverage

Charter Profile

Expiry Of Current Charters

Vessel Type	Vessel Name	May-18	May-19	May-20	May-21	Rates
Crude tanker	Amore Mio II					Spot
Product tanker	Amor					Spot
Crude tanker	Amoureux					Spot
Product tanker	Assos					Spot
Crude tanker	Aias					Spot
Product tanker	Avax	■				\$15,400
Product tanker	Axios	■				\$15,400
Product tanker	Arionas	■				\$10,750
Product tanker	Alkiviadis	■				\$12,750
Product tanker	Aiolos	■				\$11,000 +50/50 PS
Product tanker	Atlantas II	■				\$11,000 +50/50 PS
Product tanker	Active	■				\$15,550 ¹
Crude tanker	Miltiadis M II	■				\$18,000 +50/50 PS above \$22,000
Product tanker	Atrotos	■	■			\$17,750
Product tanker	Aktoras	■	■			\$13,500
Product tanker	Agisilaos	■	■			\$19,000
Product tanker	Apostolos	■	■			\$17,750
Product tanker	Anemos I	■	■			\$17,750
Product tanker	Akeraios	■	■			\$17,750
Containership	Agamemnon	■	■			\$20,000
Product tanker	Amadeus	■	■			\$14,500/\$14,750
Containership	Archimidis	■	■			\$18,000
Containership	CMA CGM Amazon	■	■			\$39,250
Product tanker	Alexandros II	■	■			\$14,700
Product tanker	Ayrton II	■	■			\$14,700
Product tanker	Aristotelis II	■	■			\$14,700
Product tanker	Anikitos	■	■			\$15,300
Dry Bulk	Cape Agamemnon	■	■			\$42,200
Containership	CMA CGM Uruguay	■	■			\$39,250
Product tanker	Aris II	■	■			\$14,700 ³
Containership	CMA CGM Magdalena	■	■			\$39,250
Crude tanker	Aristaios	■	■	■		\$26,400
Containership	Hyundai Prestige	■	■	■	■	\$29,350 ²
Containership	Hyundai Premium	■	■	■	■	\$29,350 ²
Containership	Hyundai Paramount	■	■	■	■	\$29,350 ²
Containership	Hyundai Privilege	■	■	■	■	\$29,350 ²
Containership	Hyundai Platinum	■	■	■	■	\$29,350 ²

Revenue Weighted Average Remaining Charter Duration: 5.0 Years

¹ M/T 'Active' fixed for 50-90 days at \$15,550pd or 6+6 months at \$15,000 / \$16,000pd. Option to be declarable by charterer in July 2018. ² \$23,480pd between July 18, 2016 to December 31, 2019. ³ \$6,600pd through mid July under a Bareboat charter.

