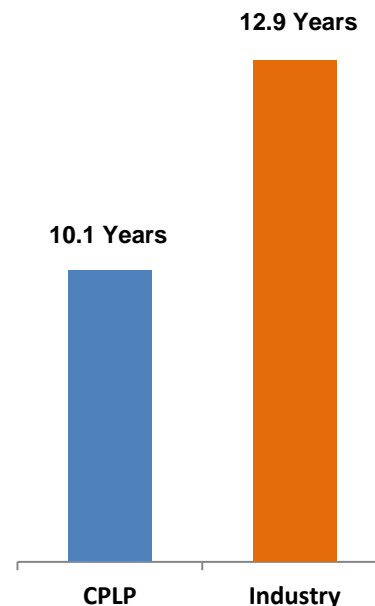


Modern High-Specification Fleet

Fleet Profile

Vessel Name	Type	TEU / DWT	Built	Yard
Aristomenis	Container Carrier	10,000	2011	SHI
Athos	Container Carrier	10,000	2011	SHI
Athenian	Container Carrier	10,000	2011	SHI
Akadimos	Eco-Flex, Wide Beam Container Carrier	9,288	2016	Daewoo
CMA CGM Uruguay	Eco-Flex, Wide Beam Container Carrier	9,288	2015	Daewoo
Agamemnon	Container Carrier	8,266	2007	Daewoo
Archimidis	Container Carrier	8,266	2006	Daewoo
Long Beach Express	Container Carrier	5,100	2008	HHI
Seattle Express	Container Carrier	5,100	2008	HHI
Fos Express	Container Carrier	5,100	2008	HHI
Hyundai Prestige	Eco Wide Beam Container Carrier	5,023	2013	HHI
Hyundai Premium	Eco Wide Beam Container Carrier	5,023	2013	HHI
Hyundai Paramaount	Eco Wide Beam Container Carrier	5,023	2013	HHI
Hyundai Privilege	Eco Wide Beam Container Carrier	5,023	2013	HHI
Hyundai Platinum	Eco Wide Beam Container Carrier	5,023	2013	HHI
Cape Agamemnon	Capesize Dry Cargo	179,221	2010	Sungdong

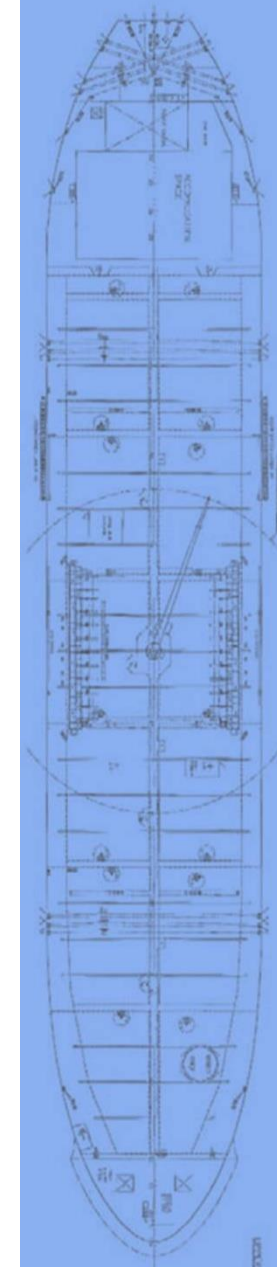
Fleet Age



16 Vessels - 1.5mm DWT (~115k TEUs)

10.1 Years Average Fleet Age

¹ Industry average age data from Clarksons as of April 2021 weighted by dwt for the composition of the CPLP fleet.



Strong Charter Coverage

- **Strong charter coverage on CPLP assets.**
 - ▶ 15 containerships and 1 drybulk vessel with 4.0 years remaining on charter on average.
- **90% and 85% charter coverage for 2021 and 2022, respectively.**

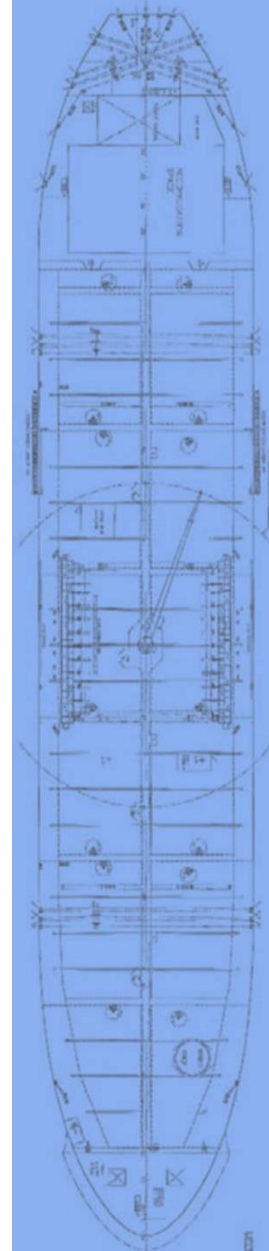
Charter Profile

Expiry of Current Charters

Rates

Vessel Type		May-21	May-22	May-23	May-24	May-25	Gross Rate Per Day
Dry Bulk	Cape Agamemnon						-
Containership	Adonis	■					\$33,500
Containership	Akadimos		■				\$29,800 ¹
Containership	Agamemnon			■			-.2
Containership	Archimidis			■			-.2
Containership	Hyundai Prestige				■		\$34,250
Containership	Hyundai Premium				■		\$34,250
Containership	Hyundai Paramount				■		\$34,250
Containership	Hyundai Privilege				■		\$34,250
Containership	Hyundai Platinum				■		\$34,250
Containership	Long Beach Express				■		\$12,300
Containership	Seattle Express				■		\$12,300
Containership	Fos Express				■		\$12,300
Containership	Athos				■		\$26,950 ³
Containership	Aristomenis				■		\$26,950
Containership	Athenian				■		\$26,950 ³

High Quality Customer Base



¹ Blended average of escalating rate basis minimum charter period. ² Expected to generate collectively an EBITDA of approximately \$44.5 million.

³ \$25,950pd until Jul/2021.