

CAPITAL



M/V HYUNDAI PRESTIGE M/V HYUNDAI PREMIUM M/V HYUNDAI PARAMOUNT M/V HYUNDAI PRIVILEGE M/V HYUNDAI PLATINUM

BUILT: 2013

BUILDER: Hyundai Heavy Industries, Gunsan, S.Korea

CLASS: LRS

FLAG: LIBERIA



VESSEL PARTICULARS

Type of vessel:

+100A1 Container Ship, ShipRight (SDA, FDA plus, CM, ACS(B)), CCSA, *IWS, LI, EcoRight (A, GW, IHM, P)+LMC, UMS, NAV1-IBS, CG Green Passport, Part Higher Tensile Steel, ShipRight(BWMP(S), SERS, SCM, MPMS, HPMS)

Length, overall:

255.49 m

Length, between pp:

242.00 m

Breadth, moulded:

37.40 m

Depth, to main deck:

22.10 m

Draught, design (Td):

12.00 m

Draught, scantling (Ts):

13.52 m

Air Draft:

57.00 m, distance from keel to highest mast (tilted)

Deadweight, design (Td):

50,935 MT

Deadweight, scantling (Ts):

63,010 MT

International NT

29,745

International GT

52,467



CONTAINER CAPACITY

Nominal capacity

On Deck:

3,041 TEU (max 9 tiers)

In Holds:

1,982 TEU (8 tiers)

Total

5,023 TEU

Homog. intake @ 14 mt

abt. **3,650 TEU**

Reefer Plugs on Deck

570

Reefer Plugs in Holds

200

Reefer Plugs Total

770



PROPULSION

Main engine:

Hyundai-Wartsila with low load tuning 6RT-flex82T

MCR

27,120 kW @ 80.0 rpm

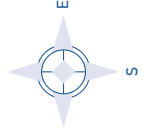
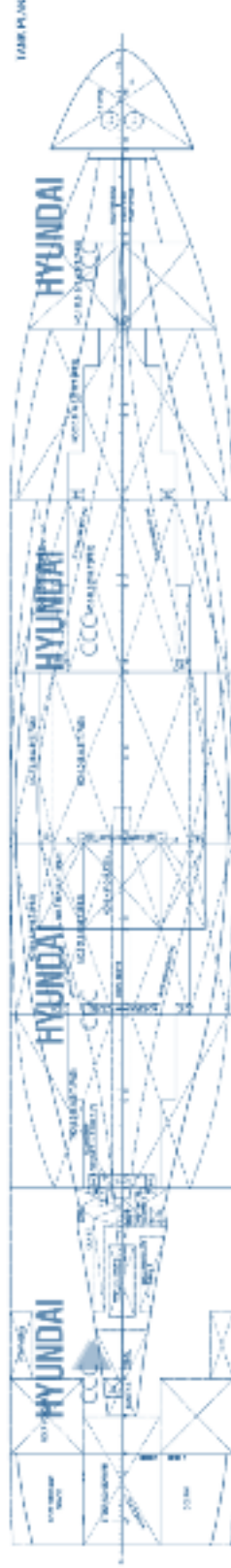
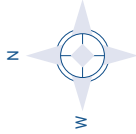
NCR

24,408 kW @ 77.2 rpm

ALL DETAILS ABOUT



SHIP MANAGEMENT CORP



M/V HYUNDAI PRESTIGE M/V HYUNDAI PREMIUM M/V HYUNDAI PARAMOUNT M/V HYUNDAI PRIVILEGE M/V HYUNDAI PLATINUM

3, Iassonos St., Piraeus 185 37, GREECE
Tel: +30 210 4584900, Fax: +30 210 4285679
e-mail: info@capitalship.gr - www.capitalship.gr