

# CAPITAL



**M/T ARISTAIOS**

**M/T ARISTOKLIS**

**BUILT:** 2017

**CLASS:** LLOYDS

**FLAG:** MARSHALL ISLANDS



**BUILDER:** Daehan Shipbuilding Co. Ltd, S.Korea

## VESSEL PARTICULARS

Type of vessel:	100A1, Double Hull Oil Tanker, CSR, ESP, ShipRight (ACS(B,C) CM), Ice Class 1C FS, *IWS, LI, DSPM4, ECO (BWT, IBTS, IHM,P, SEEMP, VECS-L), *LMC, UMS, IGS, COW(LR), ETA, ShipRight (BWMP(S,T), SERS, SCM
Summer deadweight:	112,800 MTS
Summer draft:	15.023 m
Summer freeboard:	5.669 m
GRT / NRT:	60,751.00 / 35,896.00
LOA:	249.90 m
Beam:	44.00 m
Depth:	20.65 m
Keel to mast:	49.00 m

## CARGO ARRANGEMENTS

Cargo / slop tanks:	12 / 2
Cargo capacity (98% ex slop tanks):	120,891.50 m <sup>3</sup>
Slop tank capacity (98%):	2,700.60 m <sup>3</sup>
Cargo tank coating:	Phenolic epoxy
Heating arrangement:	Heating Coils
SBT / IGS / COW:	Yes
Number of manifolds on each side:	7
Distance bow to mid-point manifold:	124.78 m
Distance main deck to center manifold:	2100 mm
Distance manifolds to ship's rail:	4600 mm
Natural segregation with double valves:	6 + 1
Cranes / SWL:	2 x 15 T



## CARGO PUMPS

Cargo pump type:	Centrifugal Vertical Single Stage
Number of cargo pumps:	3
Capacity of cargo pumps:	3 x 3000

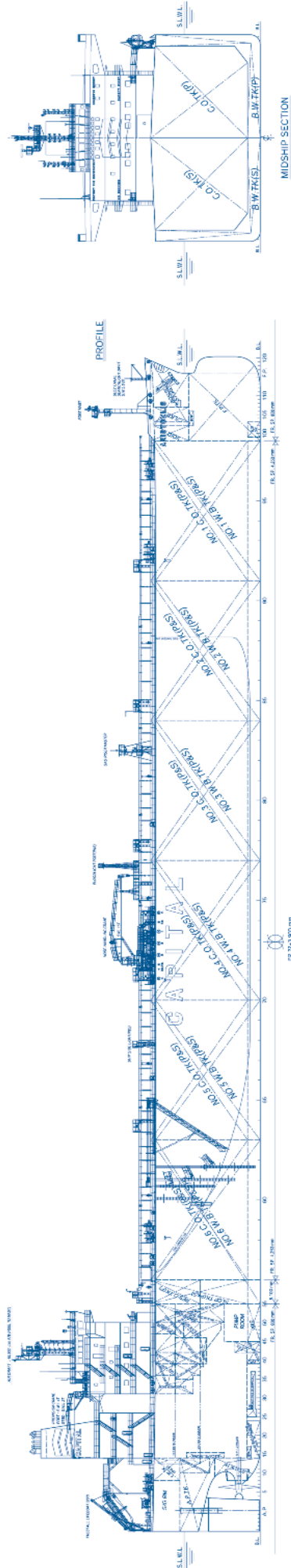
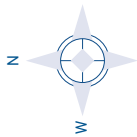
## PROPULSION

Main engine:	MAN B AND W 6G60ME-C 9,5 8390 kW
Propeller type:	Fixed pitch
Generators:	3 X 900 kW STX
Bow thruster:	N/A

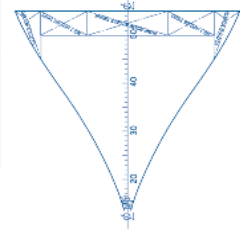
ALL DETAILS ABOUT

# CAPITAL

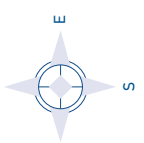
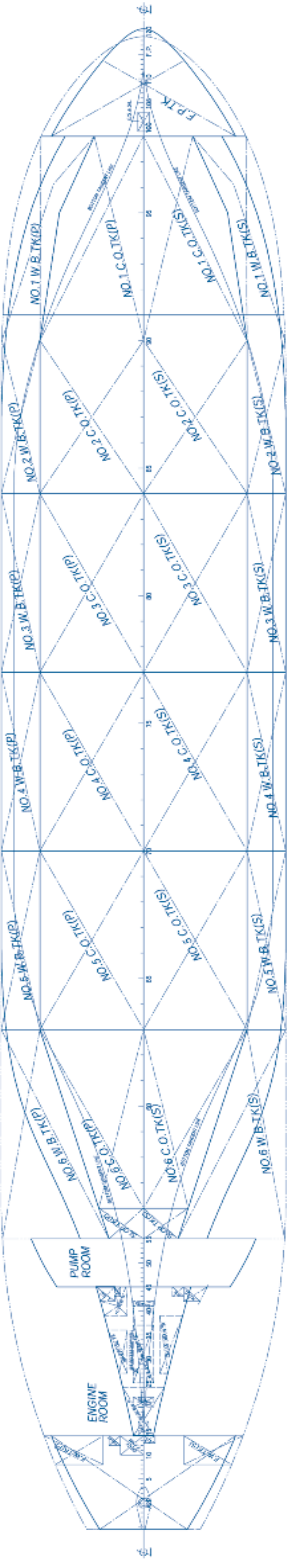
## SHIP MANAGEMENT CORP



PUMP ROOM TOP (7,050 A/B)



TANK TOP



## M/T ARISTAIOS M/T ARISTOKLIS

3, Iassonos St., Piraeus 185 37, GREECE  
Tel: +30 210 4584900, Fax: +30 210 4285679  
e-mail: info@capitalship.gr - www.capitalship.gr