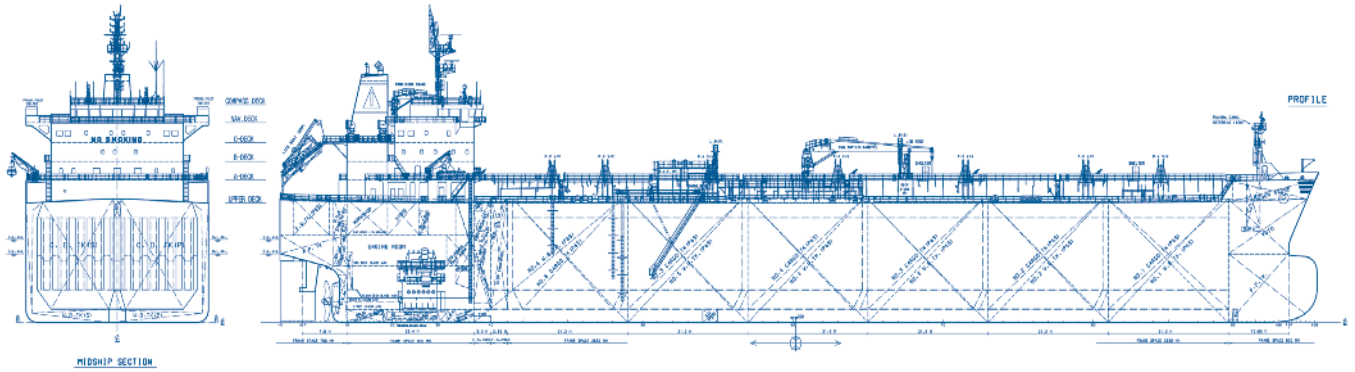


CAPITAL



M/T ARISTOTELIS

BUILT: 2013

CLASS: LRS

FLAG: LIBERIA



BUILDER: HYUNDAI MIPO DOCKYARD Co. LTD - S. Korea

VESSEL PARTICULARS

Type of vessel:	+100A1, Double Hull Oil and Chemical Tanker, Ship Type2&3, CSR,C9 ESP, Ship Right(CM, ACS(B)), *IWS, LI, SPM4, ECO(IHM), EP(Bt, P, Vc), LMC, IGS, UMS Descriptive notes:COW(LR), Part Higher Tensile Steel, PL(LR), SBT(LR), ShipRight(BWMP(S, T), SCM, SERS).
Summer deadweight:	51,604 MT
Summer draft:	13.315 m
Summer freeboard:	5.813 m
GRT / NRT:	29877 / 14127
LOA:	183.31 m
Beam:	32.20 m
Depth:	19.10 m
Keel to mast:	50.78 m

CARGO ARRANGEMENTS

Cargo / slop tanks:	12 / 2
Cargo capacity (98% ex slop tanks):	53,124.7 m ³
Slop tank capacity (98%):	1,081.5 m ³
Cargo tank coating:	Phenolic epoxy
Heating arrangement:	Heat exchangers (cargo Tanks) / heating coils (SLOP Tanks)
SBT / IGS / COW:	Yes
Number of manifolds on each side:	7
Distance bow to mid-point manifold:	92.32 m
Distance main deck to center manifold:	2,100 mm
Distance manifolds to ship's rail:	4,500 mm
Natural segregation with double valves:	6 + 1
Cranes/SWL:	1 x 10 T

CARGO PUMPS

Cargo pump type:	FRAMO
Number of cargo pumps:	12+2
Capacity of cargo pumps:	12 x 600 m ³ / hr, 2 x 300 m ³ / hr

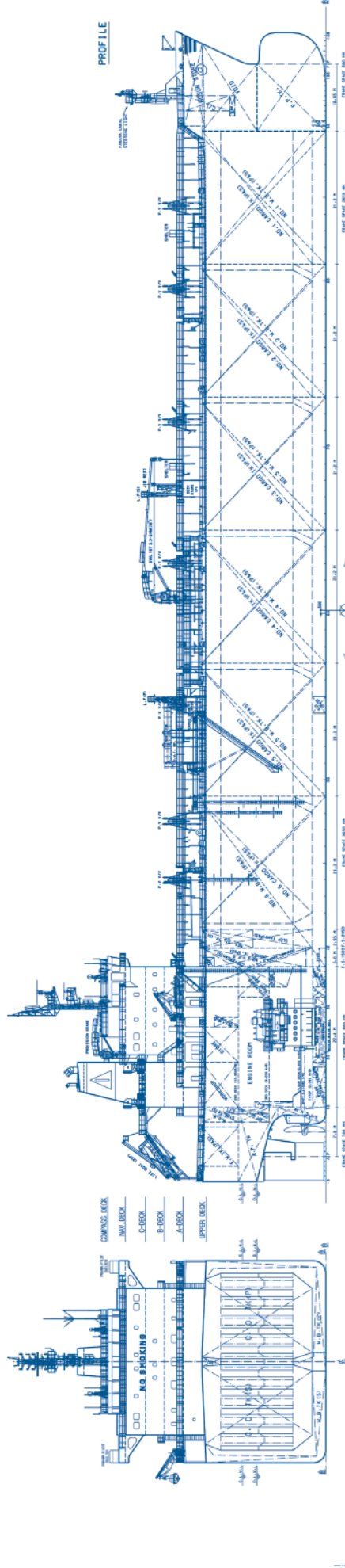
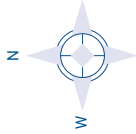
PROPULSION

Main engine:	HYUNDAI-MAN B&W 6S50ME-B9.2 10,727 BHP @ 95.6RPM NCR
Propeller type:	Fixed pitch
Generators:	3 x HHI-EMD / 6H21/32 / 850 kW @ 720 RPM
Bow thruster:	N/A

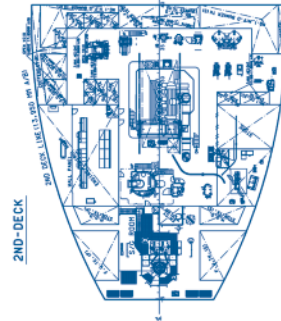
ALL DETAILS ABOUT

CAPITAL

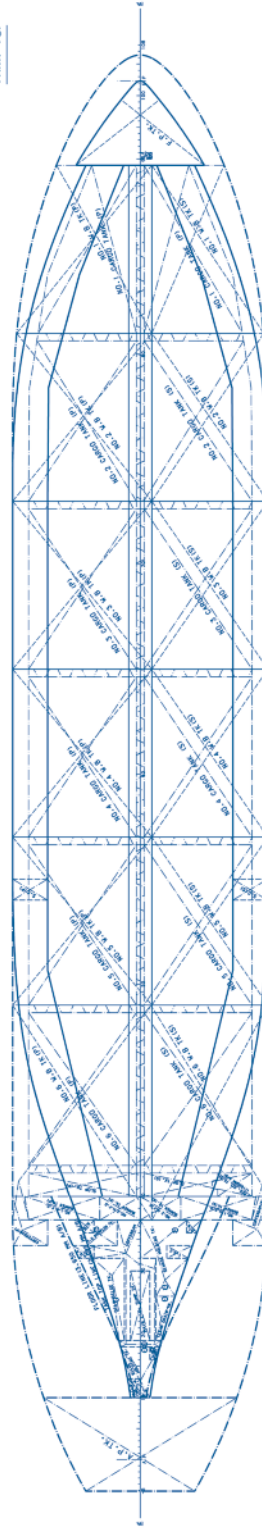
SHIP MANAGEMENT CORP



MIDSHIP SECTION



TANK TOP



M/T ARISTOTELIS

3, Iassonos St., Piraeus 185 37, GREECE
Tel: +30 210 4584900, Fax: +30 210 4285679
e-mail: info@capitalship.gr - www.capitalship.gr

