



## M/V AKADIMOS\* M/V ADONIS\* M/V ANAXAGORAS\*

**BUILT:** 2015-2016

**CLASS:** LRS

**FLAG:** LIBERIA



**BUILDER:** Daewoo Shipbuilding & Marine Engineering Co., Ltd. and Daewoo-Mangalia Heavy Industries S.A

### VESSEL PARTICULARS

Type of vessel:	LR +100A1, "Container Ship", ShipRight (SDA, ACS (B), FDA PLUS (25,WW), CM), LI, +LMC, UMS, NAV, ECO (BWT, EEDI, IHM), *IWS with the descriptive note of ShipRight (SCM, BWMP (T))
Length, overall:	299.99 m
Length, between pp:	286.80 m
Breadth, moulded:	48.40 m
Depth, to main deck:	24.80 m
Draught, design (Td):	12.50 m
Draught, scantling (Ts):	14.50 m
Air Draft:	62.00 m, distance from keel to highest mast (tilted)
Deadweight, design (Td):	90,005 MT
Deadweight, scantling (Ts):	115,145 MT
International NT:	59,714
International GT:	96,424

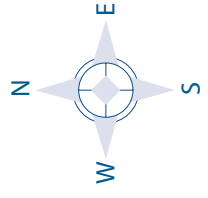
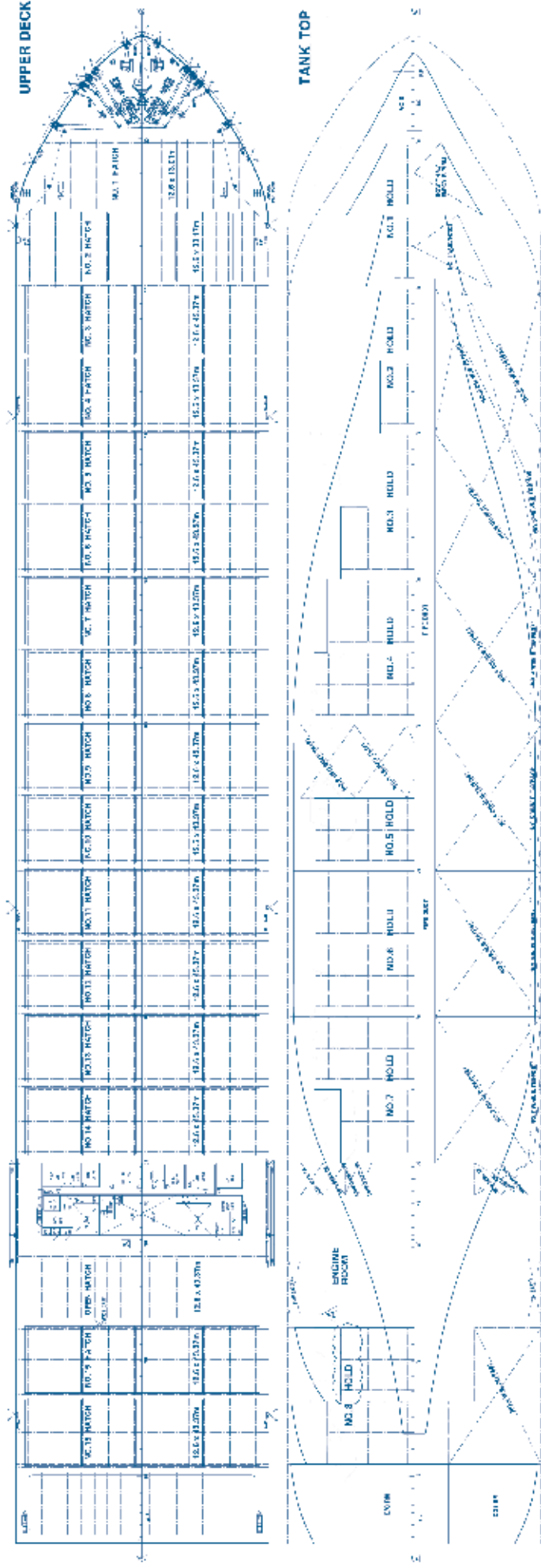
### CONTAINER CAPACITY

Nominal capacity	
On Deck:	5,546 TEU (max 10 tiers)
In Holds:	<u>3,742 TEU (9 tiers)</u>
Total	<u>9,288 TEU</u>
Homog. intake @ 14 mt	abt. 7,580 TEU
Reefer Plugs on Deck	1000
Reefer Plugs in Holds	<u>500</u>
Reefer Plugs Total	<u>1500</u>

### PROPULSION

Main engine:	Wartsila W9x82 (de-rated) LLT
MCR	37,200 Kw @ 80.0 rpm
NCR	33,480 Kw @ 77.2 rpm
	ALL DETAILS ABOUT

\* These vessels are currently under time charter to CMA CGM. For the duration of the charter they have been renamed: 'Akadimos' to 'CMA CGM Amazon', 'Adonis' to 'CMA CGM Uruguay' and Anaxagoras to 'CMA CGM Magdalena'.



## M/V AKADIMOS M/V ADONIS M/V ANAXAGORAS

CAPITAL-EXECUTIVE SHIP MANAGEMENT CORP.

3, Iassonos St., Piraeus 185 37, GREECE

Tel: +30 210 4558600, Fax: +30 210 4558655

e-mail: info@capital-executive.gr - www.capital-executive.gr