

CAPITAL



M/T AKERAIOS

M/T ANEMOS I

M/T APOSTOLOS

M/T ATROTOS

M/T AVAX

M/T AXIOS

BUILT: 2007

CLASS: LRS

FLAG: LIBERIA



BUILDER: Hyundai Mipo Dockyard Company Ltd., S. Korea

VESSEL PARTICULARS

Type of vessel:

ICE CLASS 1A, OIL, PRODUCT & CHEMICAL TANKER,
IMO II/III,100A1 DOUBLE HULL ESP, LI.

Summer deadweight:

47,823.2 MT

Summer draft:

12.517 m

Summer freeboard:

5.513 m

GRT / NRT:

27,916 / 13,081

LOA:

183.88 m

Beam:

32.20 m

Depth:

18.00 m

Keel to mast:

46.55 m



CARGO ARRANGEMENTS

Cargo / slop tanks:

12/2

Cargo capacity (98% ex slop tanks):

49,565 m³

Slop tank capacity (98%):

1,006 m³

Cargo tank coating:

Phenolic Epoxy

Heating arrangement:

12 units heat exchangers SUS 316L cargo tanks
heating coils SUS 316L slop tanks

SBT / IGS / COW:

Yes

Number of manifolds on each side:

6 x 12" cargo + 2 x 8" slop

Distance bow to mid-point manifold:

92.88 m

Distance main deck to center manifold

2,100 mm

Distance manifolds to ship's rail:

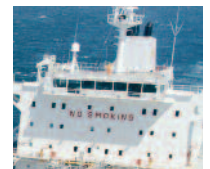
4,600 mm

Natural segregation with double valves:

6 + 1

Cranes / SWL:

1 x 10 T



CARGO PUMPS

Cargo pump type:

Hydraulic driven, submerged centrifugal Framo pumps

Number of cargo pumps:

12 + 2

Capacity of cargo pumps:

12 x 600 m³ / hr + 2 x 300 m³ / hr

PROPULSION

Main engine:

B&W 7S50MC-C - MCR 15,820 bhp @ 127 RPM

Propeller type:

Controllable pitch propeller

Generators:

2 x 900 kW @ 720 RPM + 1 x 740 kW @ 720 RPM

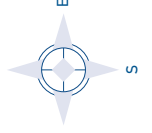
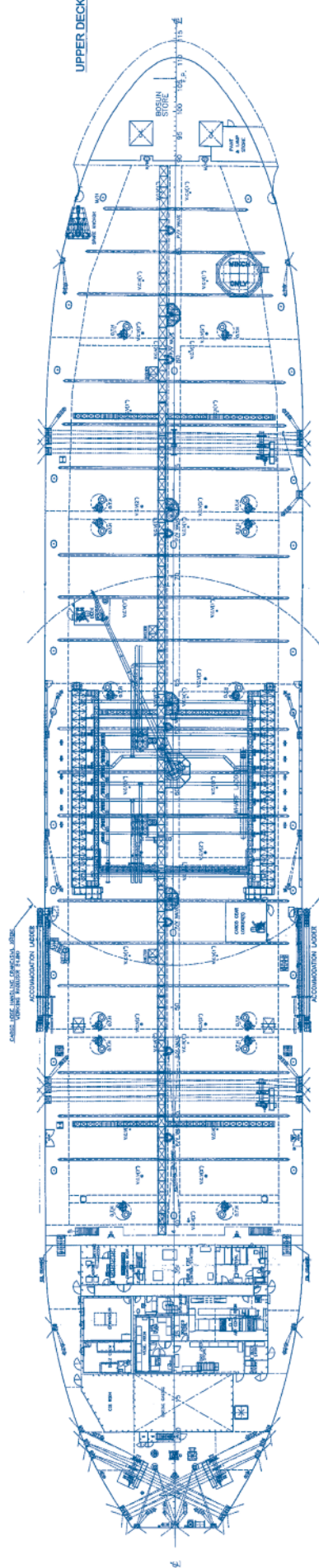
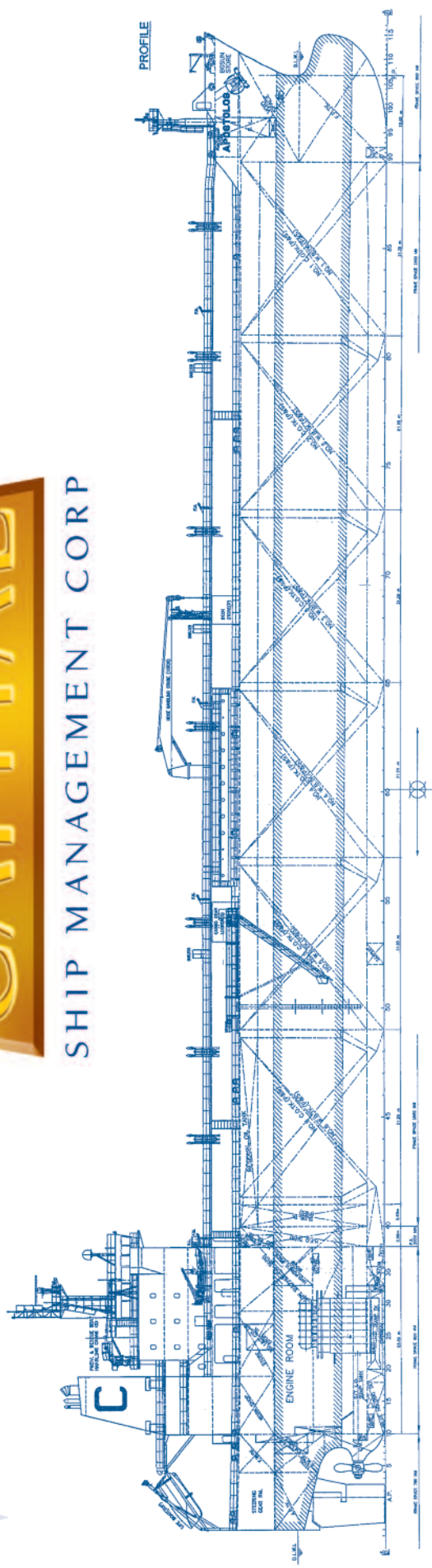
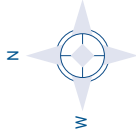
Bow thruster:

N/A

ALL DETAILS ABOUT



SHIP MANAGEMENT CORP



M/T AKERAIOS M/T ANEMOS I M/T APOSTOLOS
M/T ATROTOS M/T AVAX M/T AXIOS

3, Iassonos St., Piraeus 185 37, GREECE
Tel: +30 210 4584900, Fax: +30 210 4285679
e-mail: info@capitalship.gr - www.capitalship.gr