



MANZANILLO EXPRESS

BUILT: Oct 2022

CLASS: ABS

FLAG: MARSHALL ISLANDS



BUILDER: Hyundai Samho Heavy Industries Co., Ltd., South Korea

VESSEL MAIN PARTICULARS

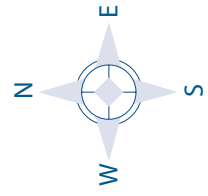
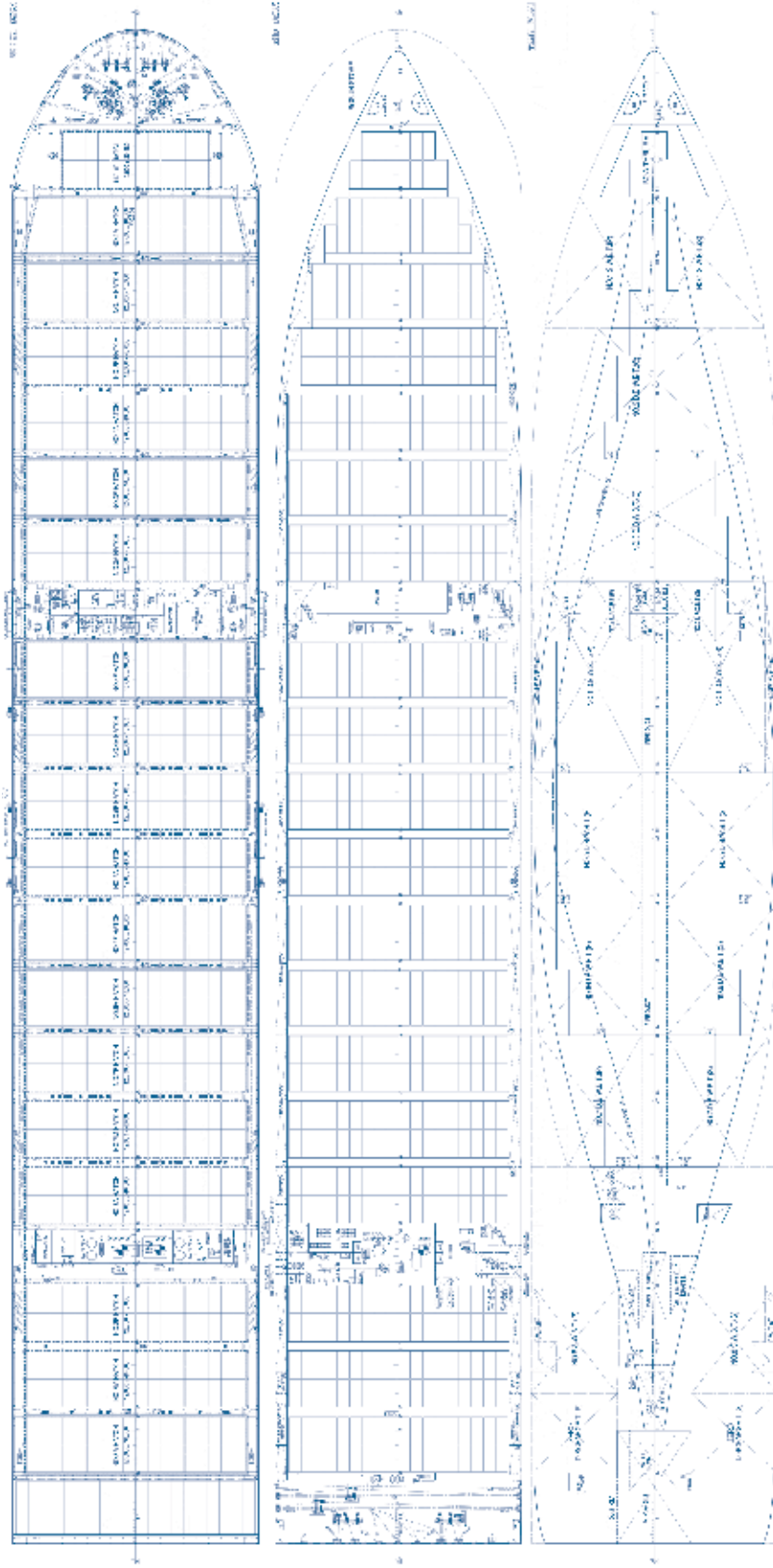
Type of vessel:	ABS + A1.(E) Container Carrier,SH,FL(25),SHCM,CPS,UWIL D,+AMS,+ACCU,BWT,TCM,CLP-V,CSC,ENVIRO,Nox-Tier III,ER GO(LASH),NBLES,HVSC,RRDA,IHM,SH-DLA
Length, overall:	335.00 m
Length, between pp:	320.00 m
Breadth, moulded:	51.00 m
Depth, to main deck:	27.30 m
Draught, design (Td):	13.00 m
Draught, scantling (Ts):	16.00 m
Air Draft:	64.00 m
Deadweight, design (Td):	98,092 mt
Deadweight, scantling (Ts):	142,411 mt
International NT:	78,883 mt
International GT:	123,560 mt

CONTAINER CAPACITY

Nominal capacity	
On Deck:	8,312 TEU
In Holds:	<u>5,000 TEU</u>
Total	<u>13,312 TEU</u>
Homog. intake @ 14 mt	9,420 TEU
Reefer Plugs on Deck	1,380
Reefer Plugs in Hold	<u>840</u>
Reefer Plugs Total	<u>2,220</u>

MAIN ENGINE

Main Engine	Hyundai-WinGD 7X92-B
MCR	79.5 rpm / 43,550 Kw
NCR	71.9 rpm / 32,170 Kw
	ALL DETAILS ABOUT & WOG



MANZANILLO EXPRESS

CAPITAL-EXECUTIVE SHIP MANAGEMENT CORP.

3, Iassonos St., Piraeus 185 37, GREECE

Tel: +30 210 4558600, Fax: +30 210 4558655

e-mail: info@capital-executive.gr - www.capital-executive.gr